



Services for Young People

Local Delivery by SCC in Woking

Index

Introduction	3
Our vision for a local youth service delivery framework	4
Achievements & Targets	5
Case study; what this means for Young People	6
Youth Development in Woking	7
Youth Justice Service in Woking	8
The Connexions Service in Woking	9
The Inclusion Service in Woking	10
The wider partnership in Woking	11
Overview of services	12
The cost of delivery	13
Appendix 1; Borough profile	14
Appendix 2; Statement of strategic direction	15

Introduction

This document describes the current and future local delivery plans for services for young people in Woking. It sets out the volume and nature of delivery that takes place through the Youth Development, Connexions, Inclusion and Youth Justice Services.

The County Council aims to have outstanding services for young people comparable to anywhere in the world. To do this our services will need to change in a transformational way. We aim to:

- Develop young people's social and emotional skills and self-esteem, enabling them to make positive choices, manage change and navigate risk
- Raise young people's aspirations and help them to achieve and feel positive towards learning. This includes helping them to be engaged and stay engaged with the wide range of learning opportunities available for 14-19 year olds
- Help foster supportive and positive families, communities and peer groups

Addressing risk factors and building the resilience of young people can help avert and address a range of problems, including:

- Youth offending / anti-social behaviour
- Drug and alcohol misuse
- Under-18 conception and poor sexual health
- Poor outcomes for teenage parents
- 16-18 year olds not in education, employment or training
- Poor school attendance and participation
- Low attainment
- Running away and youth homelessness
- Poor mental health
- Entry into care

***Our intention is to deliver world class services
for young people in Surrey.***

Our Vision For A Local Youth Services Delivery Framework

The *Surrey Youth Strategy* will set out where we want to be and how we are going to get there by 2013.



How we give local area committees more influence on the delivery of local youth services is a key transformational question. Our approach will be to increasingly involve local committees planning services from 2010-2011, based on a **needs profile** of their local area.

This profile will be based on local data, such as total numbers of young people living in the area, teenage conception or levels of young people not in education, employment or training, youth crime, anti-social behaviour, poverty and deprivation. We will consider the needs of vulnerable specific groups such as gay young people, young people from ethnic minorities, travellers and new arrivals to the UK. Local intelligence from partner agencies and, crucially, elected members will also help paint the picture of need in a borough or district. We will also assess demand from young people for services.

We plan to develop a new working model for 2011-2012 which will present a menu of ‘products’ or services; which will be delivered by the County Council in partnership with the voluntary, community and faith sector. To complement our duty to deliver statutory local services, local Committees will have a say in what other products from the menu are delivered locally. These might include detached youth work, centre based work, personal development, accredited programmes like Duke of Edinburgh’s Award, group work, targeted work with young people, arts, leisure, IT, music based youth work and so on. These products will be aligned to a countywide strategy for young people that contributes to a wider vision for Surrey. Services will also meet defined standards of quality and be contract managed through a framework agreement between providers and SCC.

The strategic direction that underpins this innovative approach is stated in the Introduction to this document, which sets out the current state of play in Woking

Achievements & Targets

(county-wide performance reflecting national targets)

	Target 2008/09	Outcome 2008/09	Target 2009/10 and 2010/11
Youth Development	Make contact with 25% of 13 – 19 year old cohort	27%	As 2008/09
	Ensure 15% of 13 – 19 year old cohort regularly participate in YDS programmes	23%	As 2008/09
	Support 60% of these participants in achieving a recorded outcome.	72%	As 2008/09
	Support 30% of these in registering on a nationally validated accredited outcome.	32%	As 2008/09
Youth Justice	Reduce number of first time entrants to the YJS. to 1424	984	Reduce first time entrants to the Youth Justice System by 5%
	Keep at or below 3% of all sentences imposed the number of Young People receiving a custodial sentence	1.7%	As 2008/09
	Maintain ethnic composition of offenders as the same (or less) than offending rate of YP categorised as "white" - 1.9%	1.4%	As 2008/09
	Maintain above or at 80% the number of Young Offenders engaged in suitable education, employment or training.	77.5%	As 2008/09
	Maintain above or at 95% the number of Young offenders with access to suitable accommodation	92%	As 2008/09
	Reduce rate of proven re-offending by young offenders to 34.1% by 2010/11	31.7%	<33.9% rate of proven reoffending by young offenders over 12 months
Connexions	Reduce number of young people aged 16 – 18 who are NEET to 3.4% of cohort	3.4%	Number of young people aged 16 – 18 who are NEET; 3.6% of cohort (2009/10)
	Reduce number of young people who are Unknown to 4.5%	3.7%	Number of young people who are Unknown < 4.5%
	Offer 100% of young people a place in education, employment or training post-16 (September Guarantee)	Yr11 99.2%, Yr 11 94.9%	As 2008/09
	Increase number of Yr11s remaining in full time education to 82%	93.6%	Number of 16 – 18 year olds participating in learning; 83%
	Maintain the number of 16 – 18 year olds participating in learning (ETE) at 82%	82.8%	As 2008/09
Inclusion	Reduce permanent exclusions across Surrey to 158	151	Permanent exclusions range 147-137
	Reduce fixed term exclusions across Surrey from baseline of 6663	5788	Fixed term exclusions <10%
	Reduce persistent absence rate to 5.1%	5%	Persistent absence <4.9%

What This Means For Young People

Case Study; A young person living in Woking

Submitted by a Connexions Personal Adviser, July 2009

This young person has been working with the **Woking YMCA's** Nhance project. Although she is a very intelligent girl she has a serious defiance problem and has been excluded from school several times.

She admitted her drug and alcohol misuse to the **Connexions** PA working with her at the YMCA, and along with her behavioural issues there were serious concerns that she would become permanently excluded.

With encouragement from the PA, this young person attended a drugs workshop delivered by **Surrey DAAT**, from which she learned risks and consequences of this lifestyle choice.

The **Inclusion Service** education welfare officer supported the PA in helping the young person confront her behaviour and attitude issues, and arranged for her to visit a woman's prison to see the possible consequences of her behaviour.

Her **school** has serious reservations about the young person attending a class residential due to the risk she posed to herself and others, but she turned a major corner in her life when the Assistant Principal agreed for her to go, subject to her signing a behavioural agreement.

During the residential she behaved well and achieved a lot from the weekend.

As a result of integrated work by the Connexions PA, Inclusion service EWO, and school this young person has not taken drugs for 2 months and is also trying to give up smoking. She says that her new understanding of the consequences of substance misuse, and the visit to the prison opened her eyes to what she was doing to herself and those around her. Her school behaviour has improved and she is concentrating more on her education and not getting into trouble.

'Although it was a bumpy ride at times, she has responded really well to the programme and to us.' said the PA. 'I have seen so much turn around in this young person and I do believe that we have positively affected her life.'

Youth Development in Woking

Monday	Tuesday	Wednesday	Thursday	Friday	Saturday	Sunday
Lakers Y.C.	Lakers Y.C.	Lakers Y.C.	Lakers Y.C.	Lakers Y.C.	Lakers Y.C.	Lakers Y.C.
Alternative Learning Programme 11.30-15.00	Accredited Schools Project 08.30-15.30		Accredited Schools Project 08.30-15.30			
Underground X (Church Youth Group) 19.30-21.00	Woking Youth Circus 19.00-21.00	Drop-in Youth Session 19.00-21.00		Youth Committee 17.00-19.00		
Link Leisure (Holiday Programme for young people with disabilities) takes place Monday to Friday 10:00-16:00 during Easter & Summer holidays						
Sheerwater Y.C.	Sheerwater Y.C.	Sheerwater Y.C.	Sheerwater Y.C.	Sheerwater Y.C.	Sheerwater Y.C.	Sheerwater Y.C.
NACRO Project ("Training Into Employment" Project for disengaged 14-19 year olds) Mon-Fri 10.00-13.00						
Young Parents Group 14.00-16.00	Link Leisure (Youth Group for young people with disabilities) 18.00-21.30	Young Carers Project 15.00-17.00	"Get It On" Targeted Sexual Health Project 15.30-17.00			
Targeted Young Women's Group 16.00-18.00		Live & Direct Accredited Music Project 19.00-21.00	Drop-In Session 19.00-21.00			
Targeted Project Session 19.00-21.00						
Woking Youth Arts Centre	Woking Youth Arts Centre	Woking Youth Arts Centre	Woking Youth Arts Centre	Woking Youth Arts Centre	Woking Youth Arts Centre	Woking Youth Arts Centre
Peer Productions Youth Drama Org. Mon-Fri 09.00-17.00						Woking Youth Theatre
Experimental Drama Session 19.00-21.00	Art Session 19.00-21.00	Live & Direct Accredited Music Project 19.00-21.00	Youth Committee 19.00-21.00			
Recording Studio Session 19.00-21.00	Recording Studio Session 19.00-21.00		Accredited Arts Award Session 19.00-21.00			
Gigs, shows, exhibitions and presentations run regularly throughout the year; daytime, evenings and weekends						
Summer School 10.00-16.00 one week during August						
Woking Y.C.	Woking Y.C.	Woking Y.C.	Woking Y.C.	Woking Y.C.	Woking Y.C.	Woking Y.C.
Azzuri Community Football Org. Mon-Fri 09.00-17.00						
	Drop-In Session 19.00-21.30	Targeted Project Session 19.00-21.30	Targeted Project Session 19.00-21.30			

KEY:
Sessions delivered by members of the Youth Development Service Woking team.
Sessions delivered by members of the Youth Development Service Woking team alongside partners from other agencies/organisations
Sessions supported with resources/facilities from the Youth Development Service Woking team but staff not directly involved in delivery

Youth Development in Woking

Monday	Tuesday	Wednesday	Thursday	Friday	Saturday	Sunday
Additional Schools' Work	Additional Schools' Work	Additional Schools' Work	Additional Schools' Work	Additional Schools' Work	Additional Schools' Work	Additional Schools' Work
	Targeted Inclusion Project at Bishop David Brown School 13.00-15.00			Targeted Support Project at The Park School 09.00-12.00		
	Woking Youth Council 17.30-19.30 (monthly) Regular project work at various times & a 3 day team-building residential at Easter each year					
'Looked After Young People' Project - one 2 hour session per week at various times						
Freewheel Project (Working With Young People to Design & Build a new Mountain Biking Facility) - one 2 hour session per week at various times						
Xtreme Fun (Targeted Holiday Activities) take place during Easter & Summer Holidays at various times.						
Woking Youth Action Partnership - one 2 hour session bi-monthly plus regular project work at various times						

Youth Justice in Woking

Community and direct reparation projects

As part of their orders, young people often have to carry out some reparation either directly to the victim of their crime, or to the community as a whole. The following are the projects that are either carried out in Woking Borough or available to young people from the Borough;

Specific Projects in Woking

- **Allotments** - All produce is grown and harvested for donation to the Moorcroft Day Centre for the elderly and disadvantaged. Also makes Hanging baskets also made to donate to charitable causes.
- **White Rose Lane Nature Reserve** - Conservation work cutting back Himalayan Balsam and reclaiming boardwalks for access to the reserve.
- **Woking Leaflet Drop** - Distributing flyers to promote local community meetings.
- **Woking Hospice** - Leaflet drop advertising fundraising for Woking hospice.
- **Mayford Bypass Roundabout** - Maintaining verges and cutting back vegetation.
- **Freemantles Project** - Repairing wooden gate and cutting overgrown ivy.
- **Reclaiming Footpaths** - Cutting back overgrown vegetation.
- **Graffiti removal** - Direct Reparation to Woking Borough Council.
- **Horsell Common** - Conservation work.

Examples of County-wide projects

Brooklands Museum:

- **Inside museum:** The youth justice service are privileged to be given the opportunity to be partners of Brooklands Museum enabling our young people to assist volunteers in the maintenance and preservation of wartime artefacts. We are also involved with the safekeeping of the exhibits in the motor museum.
- **Outside museum:** Maintaining the grounds around the aeroplanes (including Concord) and museum. Clearing pathways and walkways to allow easy access for the public. YJS also assists in the conservation of this listed English Heritage site.

Some examples of projects made in the Carpentry Workshop, Stephen Woods Centre, Epsom are:

- Making memory boxes for the parents of babies who have passed away at local hospitals.
- Making wooden toys and furniture for the children's wards of Surrey hospitals.
- With the help of a skilled carpenter young offenders are able to comply with the wishes of victims who chose to participate in restorative reparation, giving an opportunity for the young person to make amends for the damage caused by creating a piece of work which has been requested, and then presenting it to the victim (in some cases, presented to the community).

Notes.

Projects listed here are only the ones that are directly managed and overseen by SYJS. There are many other projects and initiatives taking place in the area.

Connexions in Woking

Statutory services

- Universal information, advice and guidance for all 13-19 year olds
- Support for NEET and other vulnerable young people to encourage them into EET

c.9 fte PAs delivering front line services in the borough.

Schools supported by Connexions PAs in the Borough

- Bishop David Brown
- St John the Baptist
- Winston Churchill
- Woking High
- Kingsway
- The Pyrford Centre
- The Park School
- Freemantles School
- Woking College

326 days (1.75 FTE) Personal Adviser days per annum provision to provide IAG and 414 days (2.25 FTE) Intensive Support in schools throughout the Borough as part of Connexions statutory and targeted duties.

Support is given to students attending Brooklands College, Esher College and NESCOL, Guildford College targeting those who are vulnerable or more likely to need support in remaining in education.

Connexions partnership agreements with individual schools have full details of universal provision

Targeted Provision supporting NEET and other vulnerable young people

- Working in various locations throughout the Borough, including schools and the local Connexions Centre.

Other Connexions PAs providing support for young people in the Borough (dependent on needs of individuals, not time allocated)

- 2 PAs supporting BME/Asylum seeking young people.
- 1 PA keeping young people in Sheerwater and Maybury engaged in education, employment or training.
- 1 PA helping prevent young people entering the Care System and remain in stable education.
- 1 PA supporting teenage parents throughout Woking.
- 1 PA working with the Youth Justice Service to support young offenders in the Woking area.
- 1 PA supporting young people with LDD

Other dedicated Connexions projects in the Borough

- A mentoring scheme to support young people at risk of becoming NEET, delivered through Woking YMCA.

Other Connexions projects that also provide local support for young people

- 1 PA covering the west of the county dealing with young people with housing issues/who are homeless.
- 1 PA working with the Traveller community throughout the county.
- Free phone service offering universal provision 07:00-01:00 every day
- Web chat service offering universal provision 07:00-01:00 every day

Inclusion Services in Woking

Services from the Inclusion team are offered on a county wide basis and apply to children and young people of compulsory school age currently from age 5 to 16.

Statutory services

- Provision of alternative education for those at risk of exclusion through the Surrey Alternative Learning Programme.
- Provision of Short Stay School provision for learners excluded from Surrey Schools.
- Education Welfare services for learners in Surrey maintained schools in the area.
- Provision of alternative education for learners missing education through tutoring and mentoring.
- The provision of an education advice service for those parent and carers electing for home education delivery.
- Provision of advice and guidance to schools, parents/carers and learners to prevent exclusion and ensure exclusion procedures are followed

Staff numbers in North West Surrey

SALP and Short Stay Schools –

- 10.2 fte Teachers.
- 6 fte Teaching Assistants
- 1 Family Support Worker (TTO)
- 1 Student Support Worker (TTO)
- 4 Teaching Assistants (TTO)
- 2 Mentors (TTO)
- 1 Youth Worker (TTO)
- 0.43 fte Senior Service Support
- 0.36 fte Senior Service Support Asst
- 0.87 fte ICT Technician
- 1.12 fte Service Support Assts (3)

Education Welfare Service –

- 6.04 fte

Children out of School –

- 1 fte Area lead
- 1 fte Teacher
- 1.6 fte Teachers
- 2.25 fte Mentors
- 15 sessional staff

Elective Home Education

- 0.5 fte staff member
- (Vacancy factor 0.5)

Exclusions and Reintegration

- 0.5 fte staff member
- (Vacancy factor 0.5)

Delivery locations

- North West Short Stay School
- Primary provision is through the Fordway Center in the North East

Other projects

- Notschool
- School projects

The Wider Partnership in Woking

The Borough Council

- A key partner in delivering local services.
- Woking Youth Council

- The Woking Partnership
- SSP priorities in Woking - Sheerwater and Maybury
- (LSP also recognises parts of Goldsworth east as a priority)
- C&YP priorities - mental health throughout NW Surrey, and vulnerable young people in Sheerwater and Maybury.

The Voluntary Sector

- Surrey Youth Focus as umbrella organisation
- Sure Start
- Attitude Youth Group
- Woking YMCA
- Woking Sea Rangers
- Surrey Care Trust

Uniformed Groups

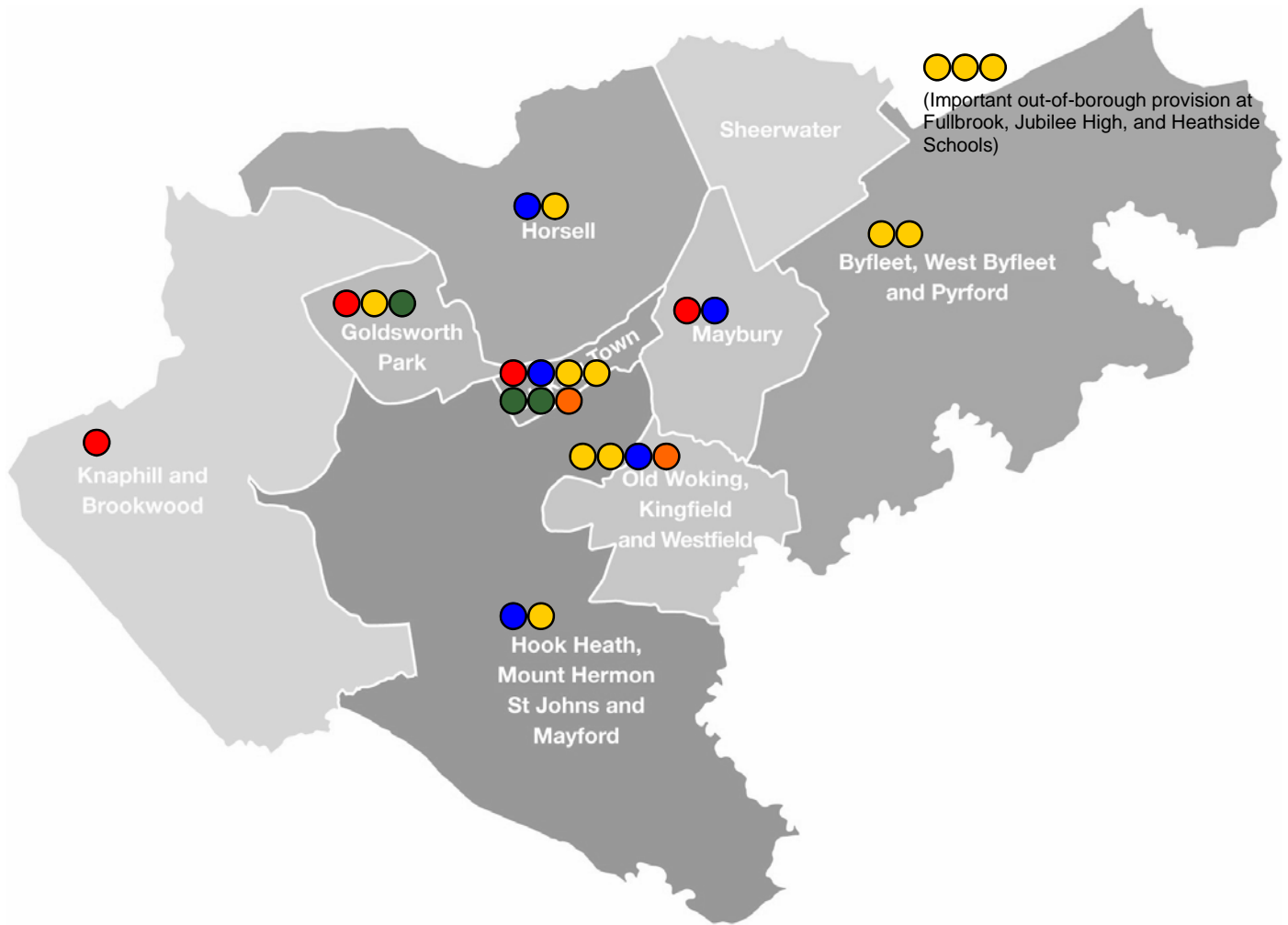
- Girlguiding Surrey West
- British Red Cross
- Surrey Clubs for Young People
- Surrey County Scout Council
- Surrey Federation of Young Farmers Clubs

Schools & Colleges

- Bishop David Brown
- St John the Baptist
- Winston Churchill
- Woking High
- Kingsway
- The Pyrford Centre
- The Park School
- Freemantles School
- Woking College
- (+ schools outside Woking Borough)

Overview Of Services In Woking

(local division schematic)



Key to locations;

- Youth Clubs
- Other YDS activities
- Connexions Centre and schools with Connexions Personal Advisers
- Youth Justice Service activity locations
- Other locations delivering services for young people within the wider partnership

The Cost Of Delivery In Woking

The statutory duties of the Youth Justice Service and Inclusion Service are administered on a county basis. Budgets, which are not subject to discretionary local spend, do not disaggregate into meaningful figures for individual Boroughs.

The Youth Development Service budget for Woking 2008-2009 was £304,500.

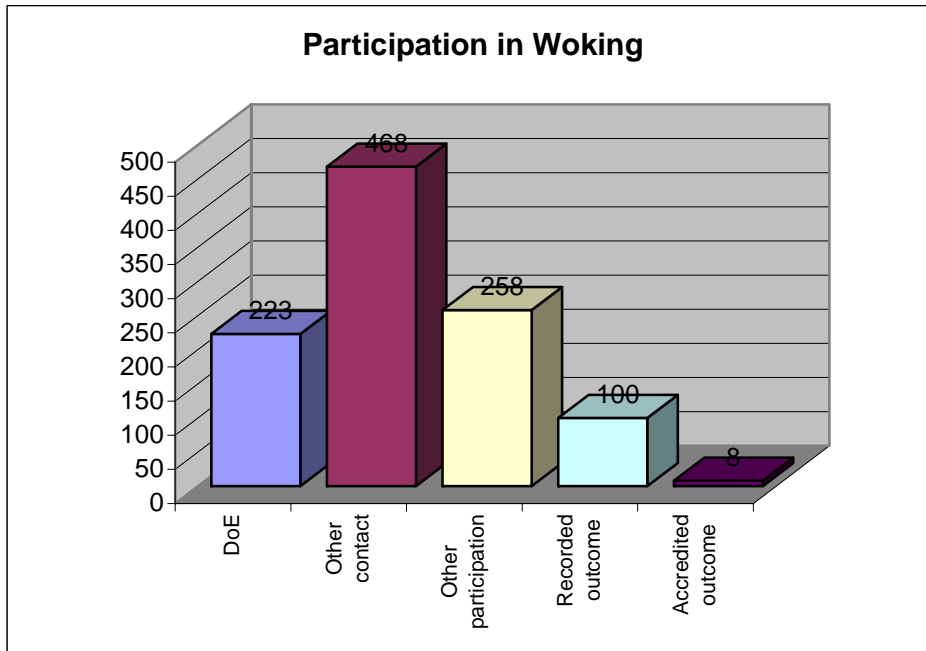
The Connexions Service commissioned 9 fte Personal Advisers for Woking in 2008-2009 with an overall contract value of £324,000 (excluding premises and other indirect costs).

Appendix 1; Borough Profile 2008-2009

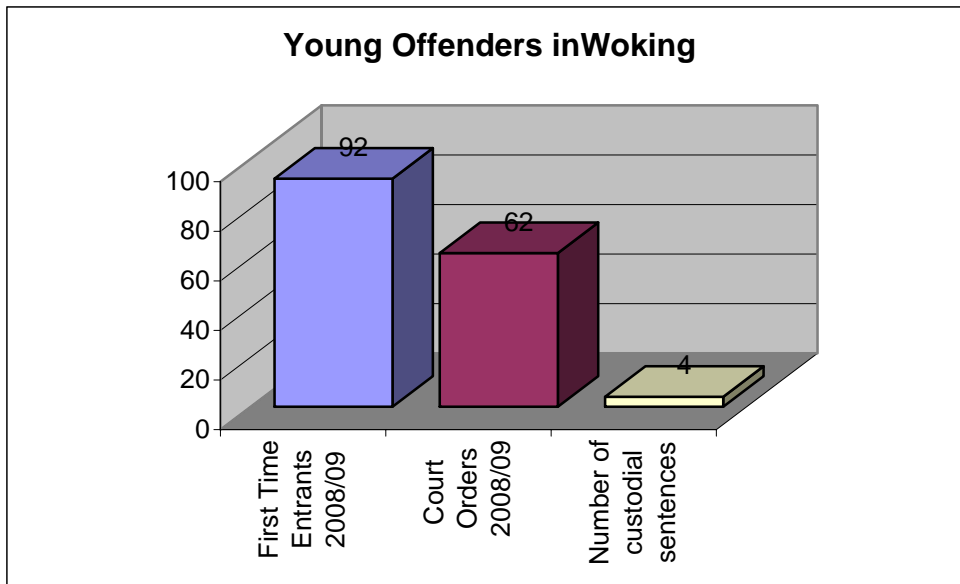
Young People In Woking

There are c.10,600 young people aged 10-19 living in Woking Borough, 7.8% of the Surrey total.

Youth Development in Woking



Young Justice in Woking



Re-offending rate in Woking 34.5% (34.1% Surrey average)

Appendix 1; Borough Profile 2008-2009

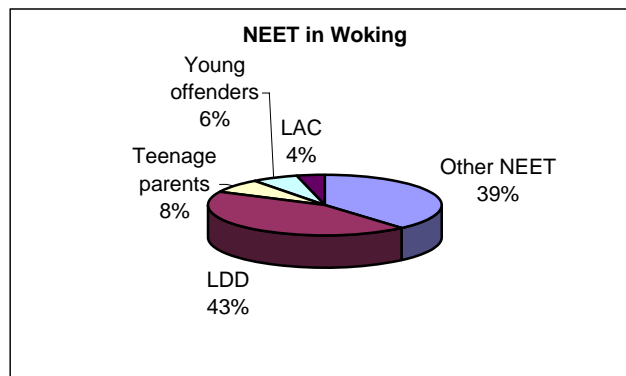
Vulnerable Young People in Woking

There were 130 young people Woking who were not in education, employment or training (NEET).

- 29 (22.3%) were sixteen years old, 48 (36.9%) were seventeen years old and 53 (40.8%) were eighteen years old.
- 64 (49.2%) were female and 66 (50.8%) male.
- 114 (87.7%) describe their ethnicity as White.

The most common circumstance/issue of NEET in this Borough is:

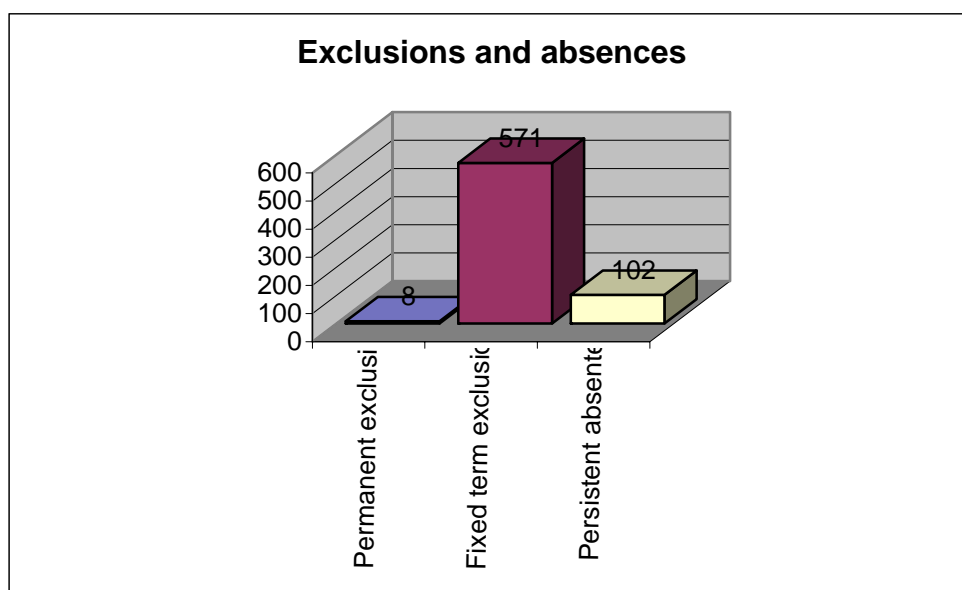
- Some form of LDD – 34 young people (43.6%) (Surrey average 44.7%)
- Teenage Mothers and/or Pregnant – 6 young people (7.7%) (Surrey average 10.2%)
- Young Offenders – 5 young people (6.4%) (Surrey average 5.1%)
- LAC or Care Leavers – 3 yp (3.8%) (Surrey average 1.6%)



35 young people have been NEET in Woking for greater than six months (Surrey total 293).

95 NEET young people (73.1%) are available for Employment, Education & Training and a further 19 (14.6%) would be available with additional support. (Those who fall into the category of available with Additional Support are: - Teenage Parents or Pregnant, Young Carers, Those Not Yet Ready for Work/Learning)

9 NEET young people have 5 or more GCSE's grade C and above or GNVQ Intermediate whilst 31 have less than 5 GCSE's/NVQ level 1.



Appendix 2; Statement Of Strategic Direction

Our strategy is to increase the **employability** of young people in Surrey particularly the **most vulnerable**. We will focus on employability but take a holistic approach to meeting the **needs** of young people – our work will be directed by their needs, and our starting point will be to improve young people's **self-esteem** and emotional wellbeing. We will have the highest **aspirations** for all Surrey youth; we want young people to enjoy growing up in Surrey. We will become a more **integrated, targeted** and **preventative** service. As a service we will contribute to Surrey's vision that *every child and young person will be safe, healthy, creative and have the personal confidence, skills and opportunities to contribute and achieve more than thought possible.*

We will radically increase vulnerable young peoples' access to paid employment ensuring that they have the skills and confidence to make a **positive contribution**. We will create integrated youth services aligning processes, people and technology, focussing on prevention and the early identification of risk and use of appropriate protective interventions. We will employ a **partnership** approach to meet young peoples' diverse needs. Specifically, but not exclusively, we will realign our services to focus on preventing teenagers from going into care, to improve outcomes for young people with learning difficulties and to maximise the potential of the most at risk. Providing an integrated youth offer will mean joining up better with partners such as health services, schools, their extended services, the police and crucially the **voluntary, community and faith sector**. We will make the referral pathway for young people for social care, support for parents, health and housing clearer.

Success will mean all young people in Surrey are safe, happy, healthy, make a positive contribution and have economic wellbeing.

A single **county wide integrated youth offer** means moving to a new partnership where we will enable the voluntary, community and faith sector to deliver universal and preventative services for young people. A partnership **youth strategy** with a single informal education curriculum, performance framework and shared goals will be required to guide our preventative work and universal provision. This offer will include the provision of alternative learning and give increased emphasis to re-integrating excluded pupils back into mainstream school from short stay schools for both primary and secondary pupils.

We will work in close and **creative partnership** with the voluntary, community and faith sector together building our joint capacity to meet the needs of young people. We will market this offer proactively working with young people to **engage young people**, endeavouring to meet local need marketing and delivering a local offer. Our youth offer will be integrated with the county's cultural offer; engaging young people in the arts, music and literature as well as sport and physical activity. We want more young people to enjoy Surrey's parks and open spaces and experience everything our county has to offer more **things to do, places to go**.

We will **listen** to the views of young people and actively promote youth issues and the perspective of young people across the entire sphere of community life in Surrey; **empowering young people** to take positive action. We will contribute to Surrey's vision for a **sustainable and cohesive community**, promoting youth volunteering, inter-generational understanding and positive images of young people; endeavouring to build self-reliant communities that nurture and support the young.

Our strategic direction is to target vulnerable young people in an effort to meet their needs and prepare them for the world of work and create a countywide youth offer with our partners.